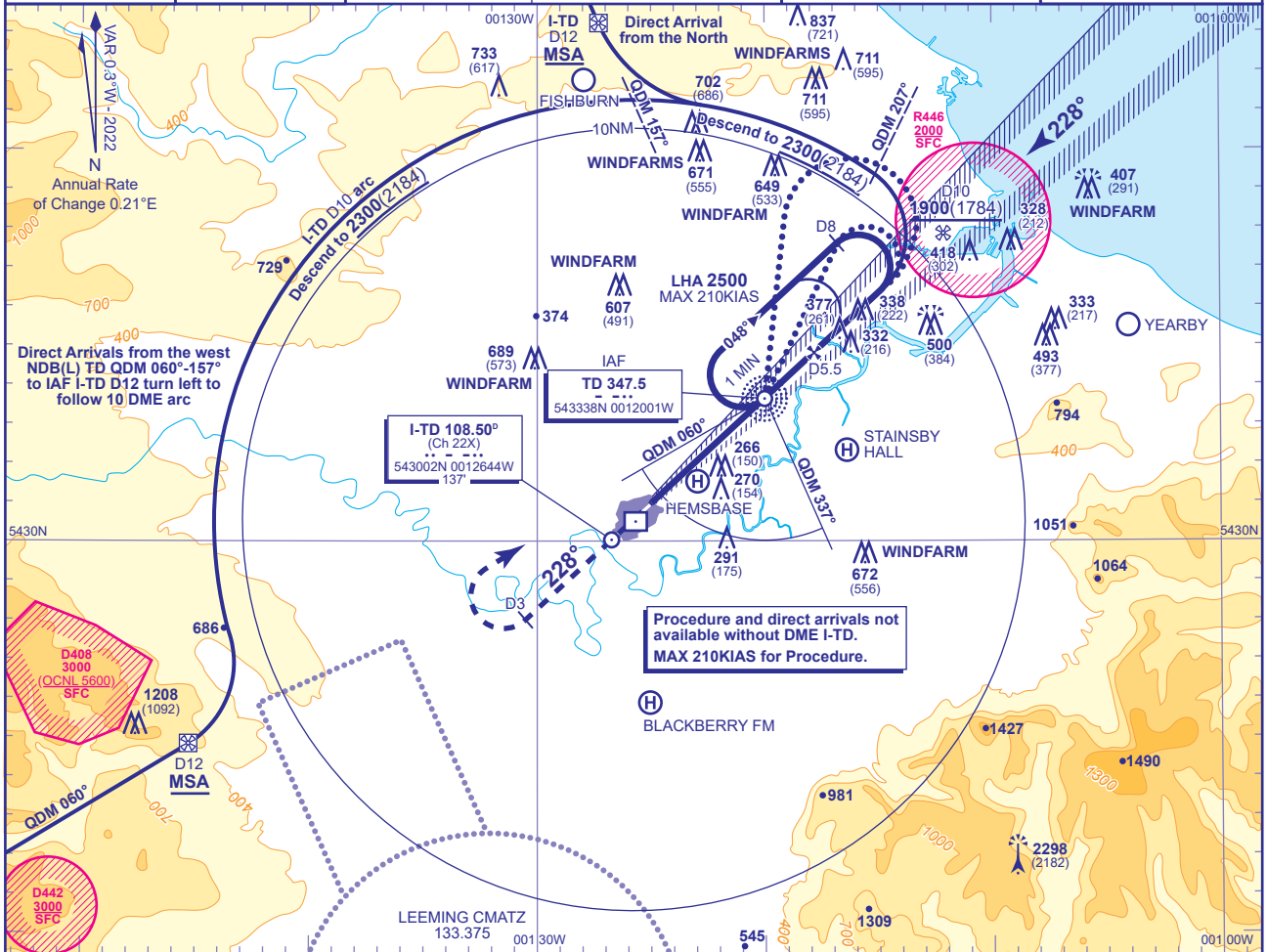


APP	118.855	TEESSIDE APPROACH	AD ELEVATION	120
TWR	119.805	TEESSIDE TOWER	THR ELEVATION	116
RAD	118.855	TEESSIDE RADAR	OBSTACLE ELEVATION	2298 AMSL (2182) (ABOVE THR)
RAD	128.855	TEESSIDE DIRECTOR		
ATIS	132.380	TEESSIDE INFORMATION	BEARINGS ARE MAGNETIC	

TRANSITION ALTITUDE
6000

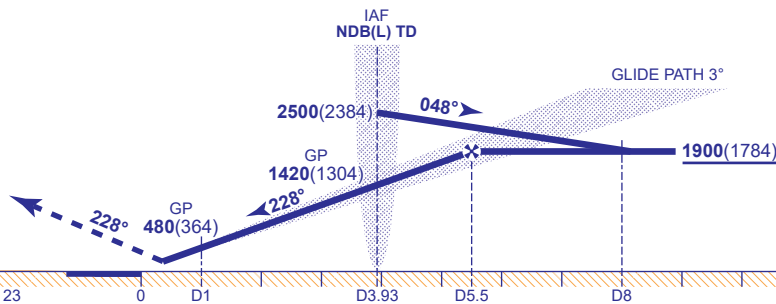
RECOMMENDED PROFILE GLIDE PATH 3°, 318FT/NM

DME I-TD	5	4	3	2	1
ALT(HGT)	1760(1644)	1440(1324)	1120(1004)	800(684)	480(364)

RDH 50

Arrival not below MSA.

Climb straight ahead to **1000** or I-TD D3 outbound whichever is later then turn right to return to NDB(L) TD to enter hold at **2500** or as directed.



Aircraft Category	A	B	C	D	Rate of descent	G/S KT	160	140	120	100	80
OCA (OCH)	CAT I	261(145)	271(155)	283(167)	297(181)	FT/MIN	850	740	640	530	420
VM(C)OCA (OCH AAL)	Total Area	590(470)	640(520)	760(640)	860(740)						

ALTERNATIVE PROCEDURE

Arrival overhead NDB(L) TD **not below MSA**, only from within sector entry between NDB(L) TD QDM 337° and NDB(L) TD QDM 060° fly outbound on NDB(L) TD QDR 026° CAT A,B and NDB(L) TD QDR 007° CAT C,D descending **not below 1900(1784)**. At I-TD DME 8 baseturn right to intercept the LOC, continue as for main procedure.

NOTE 1 No sector 1 entries to racetrack authorised.
2 Direct/arc arrivals only available with ATC clearance.

CHANGE (5/24): DME I-TD ELEVATION REVISED.